

**Effective Thursday, October 16, 2025**

**In conjunction with the opening of Skyline Segment 2, Route 20 Waikiki-Aloha Stadium will be discontinued and replaced with New W Line Airport-Waikiki**

**New W Line Bus Stop #4848 (Airport Station)** will be established fronting the Lelepaua Daniel K. International Airport Station.

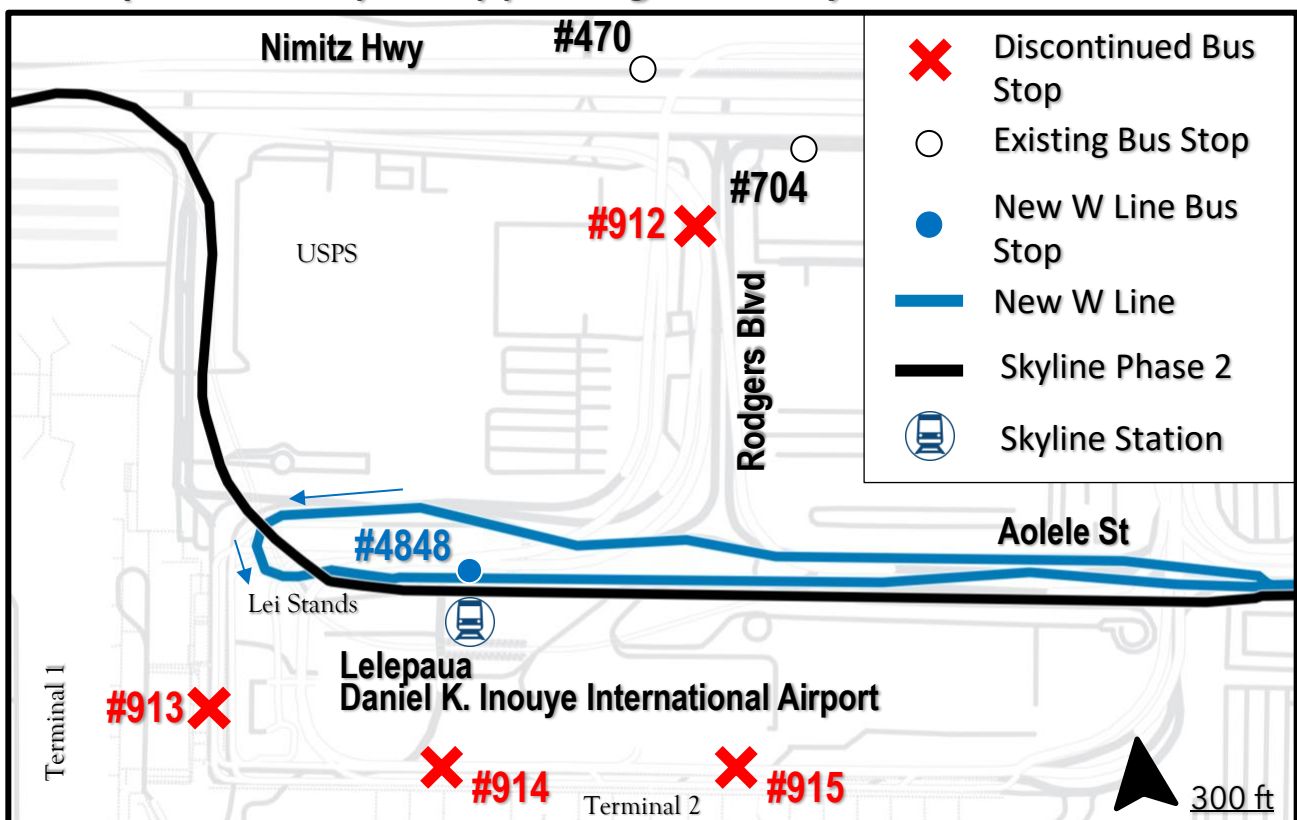
**New W Line** will provide expedited service between: Airport, Downtown Honolulu, Ala Moana Shopping Center, and Waikiki

DTS will discontinue the following bus stops:

- #912 (Rodgers Blvd + Nimitz Hwy)
- #913 (Airport Upper Level Interisland Terminal)
- #914 (Airport Upper Level Main Terminal Ewa)
- #915 (Airport Upper Level Main Terminal Diamond Head)

The following bus stops will continue to be served by Routes 40, 42, and 51:

- #704 (Nimitz Hwy + Rodgers Blvd)
- #470 (Nimitz Hwy + Opp Rodgers Blvd)



Scan the QR code to view a map of all upcoming bus service changes  
or visit <https://www.honolulu.gov/dts/skyline-thebus/>

Download the Transit App. at <https://transitapp.com/en/region/oahu> to track buses near you.

For comments/questions: Contact the DTS at 808-768-8368 or [thebusstop@honolulu.gov](mailto:thebusstop@honolulu.gov).

For schedule and route information: [www.thebus.org](http://www.thebus.org) or call 808-848-5555 (press 2).