

City & County of Honolulu

DEPARTMENT OF TRANSPORTATION SERVICES

In coordination with Councilmember Carol Fukunaga, the City and County of Honolulu Department of Transportation Services (DTS) will be relocating Express Route service from the bus stops located on Wilder Avenue at Makiki Street to the bus stops located on Wilder Avenue at Keeaumoku Street. Express Routes operating along Wilder Avenue provide service only at selected bus stops.

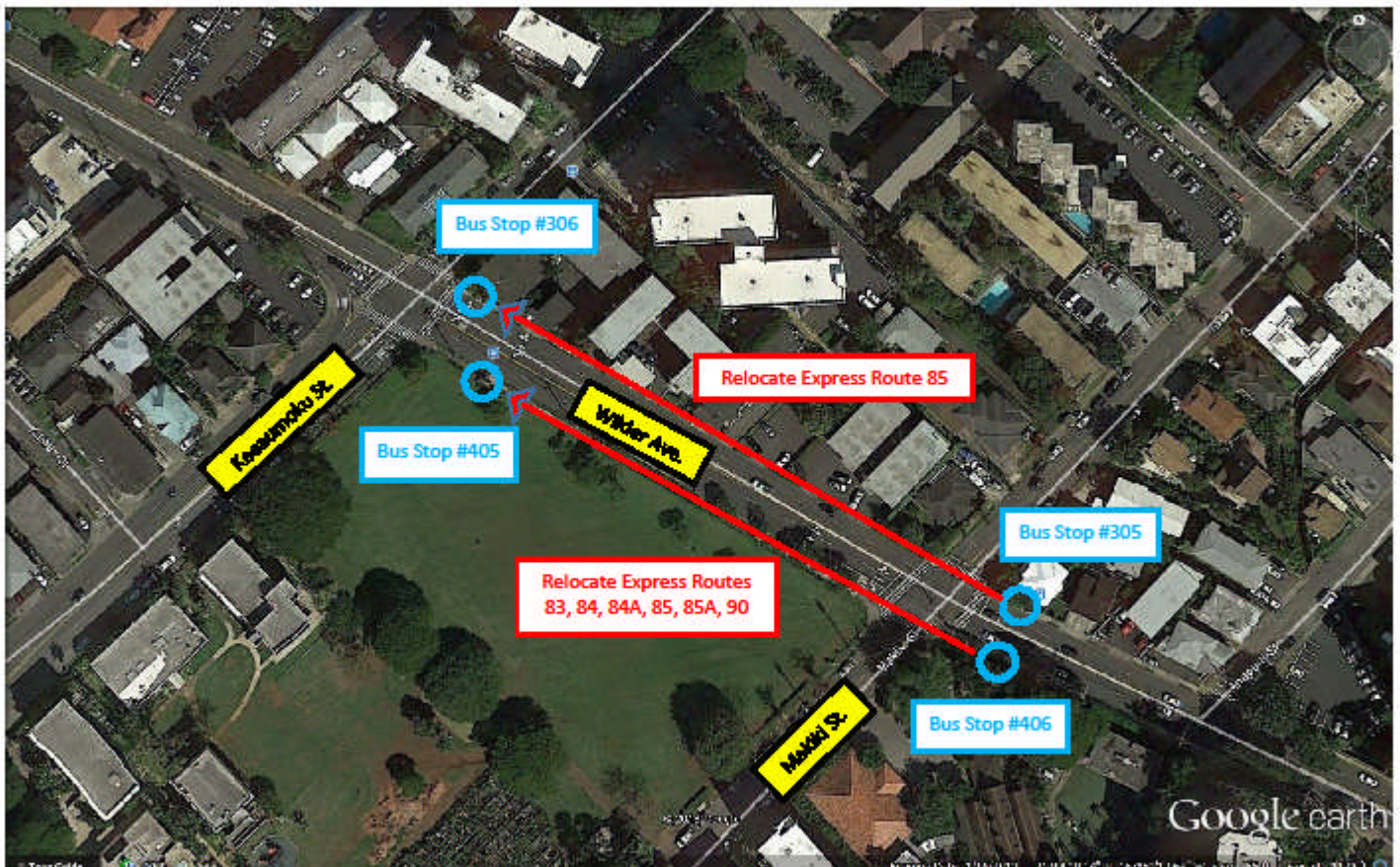
Currently, the two companion bus stops, located at Makiki Street, are designated as Express Route stops. Eastbound bus stop no. 406 serves Express Routes 83, 84, 84A, 85, 85A, and 90, while westbound bus stop no. 305 serves Express Route 85.

Effective Monday, October 3, 2016, the two companion bus stops located on Wilder Avenue at Keeaumoku Street will be the new designated Express Route stops. Eastbound bus stop no. 405 will serve Express Routes 83, 84, 84A, 85, 85A, and 90, and westbound bus stop no. 306 will serve Express Route 85.

Routes 4 and 18 are not affected and will continue to serve all bus stops along their Wilder Avenue route.

Please contact DTS at email thebusstop@honolulu.gov or (808) 768-8368 with questions or concerns.

Wilder Avenue Express Route Bus Stop Relocation



We apologize for the inconvenience.



DEPARTMENT OF TRANSPORTATION SERVICES
CITY & COUNTY OF HONOLULU

(808) 768-8368 / thebusstop@honolulu.gov